

HMDX

ONE YEAR LIMITED WARRANTY

HMDX sells its products with the intent that they are free of defects in manufacture and workmanship for a period of one year from the date of original purchase, except as noted below. HMDX warrants that its products will be free of defects in material and workmanship under normal use and service. This warranty extends only to consumers and does not extend to Retailers.

To obtain warranty service on your HMDX product, contact a Consumer Relations Representative by telephone at 1.800.753-3000 or email cservice@hmdxaudio.com for assistance. Please make sure you have the model number of the product available. Representatives are available 8:30am-7:00pm EST Monday-Friday.

No COD's will be accepted.

HMDX does not authorize anyone, including, but not limited to, Retailers, the subsequent consumer purchaser of the product from a Retailer or remote purchasers, to obligate HMDX in any way beyond the terms set forth herein. This warranty does not cover damage caused by misuse or abuse; accident; the attachment of any unauthorized accessory; alteration to the product; improper installation; unauthorized repairs or modifications; improper use of electrical/power supply; loss of power; dropped product; malfunction or damage of an operating part from failure to provide manufacturer's recommended maintenance; transportation damage; theft; neglect; vandalism; or environmental conditions; loss of use during the period the product is at a repair facility or otherwise awaiting parts or repair; or any other conditions whatsoever that are beyond the control of HMDX.

This warranty is effective only if the product is purchased and operated in the country in which the product is purchased. A product that requires modifications or adoption to enable it to operate in any other country than the country for which it was designed, manufactured, approved and/or authorized, or repair of products damaged by these modifications is not covered under this warranty.

THE WARRANTY PROVIDED HEREIN SHALL BE THE SOLE AND EXCLUSIVE WARRANTY. THERE SHALL BE NO OTHER WARRANTIES EXPRESS OR IMPLIED INCLUDING ANY IMPLIED WARRANTY OF MERCHANTABILITY OR FITNESS OR ANY OTHER OBLIGATION ON THE PART OF THE COMPANY WITH RESPECT TO PRODUCTS COVERED BY THIS WARRANTY. HMDX AUDIO SHALL HAVE NO LIABILITY FOR ANY INCIDENTAL, CONSEQUENTIAL OR SPECIAL DAMAGES. IN NO EVENT SHALL THIS WARRANTY REQUIRE MORE THAN THE REPAIR OR REPLACEMENT OF ANY PART OR PARTS WHICH ARE FOUND TO BE DEFECTIVE WITHIN THE EFFECTIVE PERIOD OF THE WARRANTY.

NO REFUNDS WILL BE GIVEN. IF REPLACEMENT PARTS FOR DEFECTIVE MATERIALS ARE NOT AVAILABLE, HMDX AUDIO RESERVES THE RIGHT TO MAKE PRODUCT SUBSTITUTIONS IN LIEU OF REPAIR OR REPLACEMENT.

This warranty does not extend to the purchase of opened, used, repaired, repackaged and/or resealed products, including but not limited to sale of such products on Internet auction sites and/or sales of such products by surplus or bulk resellers. Any and all warranties or guarantees shall immediately cease and terminate as to any products or

parts thereof which are repaired, replaced, altered, or modified, without the prior express and written consent of HMDX.

This warranty provides you with specific legal rights. You may have additional rights which may vary from state to state. Because of individual regulations, some of the above limitations and exclusions may not apply to you. For more information regarding our product line in the USA, please visit: www.hmdxaudio.com

HMDX is a trademark of HMDX.

©2013 HMDX. All Rights Reserved.

IB-HXP420

Por manual de instrucciones e Información de garantía en español visitenos en www.hmdxaudio.com



HMDX
Service Center
1.800.753-3000
8:30 am - 7:00 pm (EST)
M - F
e-mail: cservice@hmdxaudio.com

HMDX

STREAM™ WIRELESS STEREO SPEAKER



1 Year LIMITED Warranty

Instruction Manual and Warranty Information

Por manual de instrucciones e Información de garantía en español visitenos en www.hmdxaudio.com

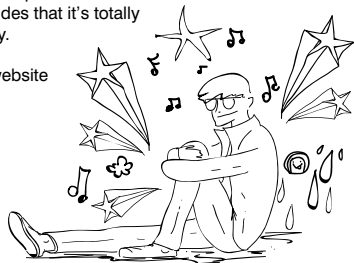


HX-P420

CONGRATULATIONS ON YOUR PURCHASE.

Thank you for purchasing the HMDX Stream Wireless Stereo Speaker. What can we say about the Stream that we haven't already said? Besides that it's totally amazing and will be life altering there's not much else to say.

Be sure to check out the entire HMDX product line on our website www.HMDXaudio.com- Living Life Out Loud!



IMPORTANT SAFEGUARDS:

When using an electrical product, basic precautions should always be followed, including the following:

READ ALL INSTRUCTIONS BEFORE USING

- Close supervision is necessary when this product is used by, on or near children, invalids or disabled persons.
- **WARNING:** Do not place speakers too close to ears. May cause damage to ear drums, especially in young children.
- Use this product only for its intended use as described in this manual. Do not use attachments not recommended by HMDX.
- Do not place or store this product where it can fall or be dropped into a tub or sink.
- Do not place or drop into water or any other liquid.
- Not for use by children. **THIS IS NOT A TOY.**
- Turn off product when not in use.
- Never operate this product if it has a damaged cord, plug, cable or housing.
- Keep away from heated surfaces.
- Only set on dry surfaces. Do not place on surface wet from water or cleaning solvents.

SAVE THESE INSTRUCTIONS

Caution: Please read all instructions carefully before operating.

- Never leave the product unattended, especially if children are present.
- Never cover the product when it is in operation.
- This unit should not be used by children without adult supervision.
- Always keep the product away from high temperature and fire.

BATTERY PRECAUTIONS

- Use only the size and type of batteries specified.
- When installing batteries, observe proper +/- polarities. Incorrect installation of battery may cause damage to the unit.
- If the unit is not going to be used for a long period of time, remove batteries to prevent damage due to possible battery leakage.
- Do not dispose of batteries in fire. Batteries may explode or leak.
- Remove used batteries promptly.
- Do not use standard (carbon-zinc), or rechargeable (ni-cad, ni-MH, etc.) batteries
- Clean the battery contacts and also those of the device prior to battery installation.



This product contains small parts that may present a choking hazard for young children.

CAUTION: All servicing of this product must be performed by authorized HMDX Service Personnel only

GETTING STARTED

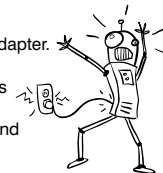
Unpack the unit carefully. Remove all the accessories from the display carton. Do not remove any labels or stickers on the rear of the unit and adaptor. Before setting up the unit, verify that the following accessories are present:

- Instruction manual x 1
- Main unit x 1
- AC power adapter x 1
- 3.5mm audio cable x 1

POWER SOURCE (FIG. 1)

This unit is supplied with an AC adapter; take the following steps to connect the adapter.

1. Connect the DC plug of the AC adapter to the DC socket on the rear of the unit.
2. Plug the AC adapter to the AC outlet (100v – 240VAC 50/60 Hz). Connecting this system to any other power source may cause damage to the system.
3. To switch the unit off completely, withdraw the AC adapter from the wall outlet and remove batteries from product.



BATTERY OPERATION

- Before installing batteries (not included), ensure that the unit is disconnected from the main power supply.
- Remove the battery compartment cover on the back of the unit by carefully pushing off the battery cover.
- Insert 4 AA size batteries(not included), referring to the polarity markings inside the battery compartment. Never mix old and new batteries.
- Replace the cover.
- For battery operation, switch off the main supply and remove the cable from the power socket, battery operation will be selected automatically.



LISTENING TO YOUR DEVICE WIRELESSLY OVER BLUETOOTH®

To listen to your music over Bluetooth® wireless connection, you need to pair your device with HDMX Stream:

1. Make sure your device has Bluetooth® capability.
2. Press the POWER button to turn on the unit. The Bluetooth® light will flash slowly after 5 seconds.
3. Once the Bluetooth® button begins to flash, press and HOLD the Bluetooth® button for a few seconds until the Bluetooth® light begins to flash quickly.
4. Follow the instructions of your device to pair the unit.
5. Pair your device with the unit by selecting Stream from your Bluetooth® listings on your device or selecting YES.
6. Press play on your device and use controls on the unit or remote to adjust to desired volume.
7. The effective range of the Stream is approximately 30-feet from the Bluetooth® device. Range can be affected by numerous factors including the Bluetooth® device, wall materials, etc. If you experience audio drop outs please move the Bluetooth® device closer to the Stream.



NOTE: Once you have successfully paired your device, you typically will not need to repeat the above steps. Please ensure the AUX cable is unplugged, the unit source is set to Bluetooth® and your device has Bluetooth® enabled.

NOTE: When pairing with a computer, please consult your computer manufacturer for Bluetooth® pairing instructions and/or the latest Bluetooth® Drivers. A pairing code is not required.

LISTENING TO YOUR DEVICE THROUGH THE AUXILIARY AUX AUDIO JACK

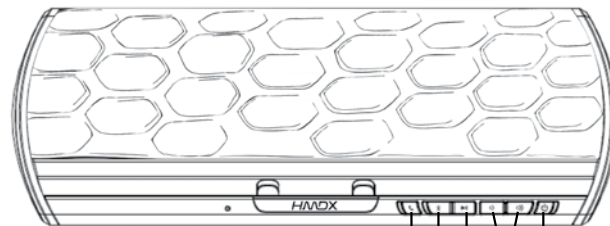
1. Connect the supplied audio cable to the headphone or line-out jack of an audio device and plug the other end of the cable into the AUX In Audio jack on the back of the unit.
2. Press the POWER button to turn on the unit.
3. Press PLAY on the device and use controls on the unit to adjust to desired volume.

NOTE: PLAY/PAUSE controls on Stream will not work when using Line-In Audio Jack.



STREAM WIRELESS STEREO SPEAKER

(Fig. 1)



1. Speaker Phone Button
2. Bluetooth® Button
3. Play/Pause Button
4. Volume Controls
5. Power Button



(Fig. 2)



1. USB Port
2. DC IN
3. AUX IN
4. Battery Compartment



HANDS FREE SPEAKERPHONE

The Stream can be used as a Hands-Free Speakerphone. When using the speakerphone make sure to talk directly at the front of the product. The built-in microphone will only work when it is connected to a Bluetooth® enabled device.

ANSWER/END A CALL

Press the PHONE button to answer and end a call.

DECLINE AN INCOMING CALL

Hold the PHONE Button for 2 seconds



MAKE A CALL

Use your phone to dial. Call will play over speakers (make sure phone is paired to speaker).

USB CHARGING PORT

- The USB port is for charging only. It cannot be used to play music through the unit.
- In order to use the USB charging feature, you must have the proper cord to connect to your device with a USB connector on the other end.

To charge your device using the USB charging port (located on the back of the unit):

1. Connect the USB type A end of the device's cable into the USB port on the rear of the Stream.
2. Connect the other end of the USB cable to your device to begin charging.

USING THE UNIVERSAL DOCK

Place tablet or smartphone in the dock.

MAINTENANCE

TO STORE

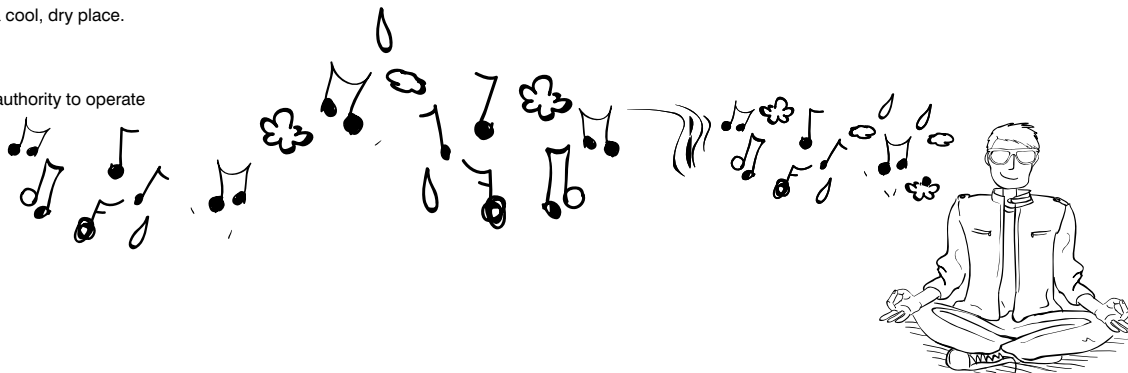
You may leave the unit on display, or you can store it in its box in a cool, dry place.

TO CLEAN

Use only a soft dry cloth to clean the enclosure of the unit.

NEVER use liquids or abrasive cleaner to clean.

Modifications not authorized by the manufacturer may void users authority to operate this device.



FCC DISCLAIMER

NOTE: This device complies with part 15 of the FCC Rules. Operation is subject to the following two conditions: (1) This device may not cause harmful interference, and (2) this device must accept any interference received, including interference that may cause undesired operation.

NOTE: This equipment has been tested and found to comply with the limits for a Class B digital device, pursuant to part 15 of the FCC Rules. These limits are designed to provide reasonable protection against harmful interference in a residential installation. This equipment generates, uses and can radiate radio frequency energy and, if not installed and used in accordance with the instructions, may cause harmful interference to radio communications. However, there is no guarantee that interference will not occur in a particular installation. If this equipment does cause harmful interference to radio or television reception, which can be determined by turning the equipment off and on, the user is encouraged to try to correct the interference by one or more of the following measures:

- Reorient or relocate the receiving antenna.
- Increase the separation between the equipment and receiver.
- Connect the equipment into an outlet on a circuit different from that to which the receiver is connected.
- Consult the dealer or an experienced radio/TV technician for help.

Changes or modifications not expressly approved by HDMX could void the user's authority to operate the equipment.

Por manual de instrucciones e Información de garantía en español visitenos en www.hmdxaudio.com