

## Choose Your Color

The Slim, stylish design is available in six color variations.



## Other Functions

### SR AUTO with Automatic Red-Eye Removal

Automatically recognizes several commonly photographed scenes and optimizes camera settings to ensure beautiful results.



### Digital Image Stabilization

Reduces image blur caused by handshake or moving subjects to ensure crisp, sharp images.

### Touch & Track

Focuses at a touch and keeps moving subjects in the frame and in focus, to ensure you always have the subject in shot.

### HDTV Compatible Photos and Videos

The FinePix Z90 captures both photos and movies in high definition 16:9 format, letting you enjoy images in breathtaking high definition quality on your HDTV screen.



### Playback All Your Favorites

Give your favorite images star ratings and quickly and easily select the photos you want to share based on any of the criteria below.



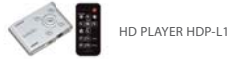
### Natural Light & with Flash

Takes two photos in quick succession, one with flash and one without, so you can choose which worked best.

### Photobook Assist

The "Favorites" rating makes it easy to pre-select images for inclusion in Photobooks, saving time at the photo kiosk or home PC.

### Optional HDTV Connection Kit



Featuring a HD card reader and a remote control, the HD connection kit (sold separately) makes it easy to display photos and movies on your HDTV.\*  
\*Optional HD player HDP-L1 is required, sold separately.

## SPECIFICATIONS

Number of effective pixels*1	14.2 million pixels
CCD sensor	1/2.3-inch CCD with primary color filter
Storage media	Internal memory (Approx. 38MB) / SD memory card / SDHC memory card / SDXC memory card*2
File format	Still image: JPEG (Exif Ver. 2.3*) / Movie: AVI (Motion JPEG) with Sound / Audio: WAVE format, Monaural sound (Design rule for Camera File system compliant)
Number of recorded pixels	L: 4:3 (4,320 × 3,240) / 16:9 (4,320 × 2,432) M: 4:3 (3,072 × 2,304) / 16:9 (3,072 × 1,728) S: 4:3 (2,048 × 1,536) / 16:9 (1,920 × 1,080)
Lens	Fujinon 5x optical zoom lens, F3.9 (Wide) - F4.9 (Telephoto)
Lens focal length	f=5.0 - 25.0 mm, equivalent to 28 - 140 mm on a 35 mm camera
Digital zoom	Approx. 6.8x (up to approx. 34x, with 5x optical zoom)
Aperture	Wide: F3.9 / F6.2, Telephoto: F4.9 / F8.0
Focus distance (from lens surface)	Normal: Wide: Approx. 60 cm / 2.0 ft. to infinity, Telephoto: Approx. 1.0 m / 3.3 ft. to infinity Macro: Wide: Approx. 9 cm - 80 cm / 3.5 in. - 2.6 ft., Telephoto: Approx. 40 cm - 80 cm / 1.3 ft. - 2.6 ft.
Sensitivity	Auto / Equivalent to ISO 100 / 200 / 400 / 800 / 1600 / 3200 (Standard Output Sensitivity)
Shooting modes	Portrait, Portrait enhancer, Landscape, Sport, Night, Night (Tripod), Sunset, Snow, Beach, Party, Flower, Text
Shutter speed	(Auto mode) 1/4 sec. to 1/2000 sec. (All other modes) 4 sec. to 1/2000 sec.
LCD monitor	3.0-inch wide, Approx. 230,000 dots, TFT color LCD monitor, Approx. 96% coverage
Movie recording	1280 × 720 pixels / 640 × 480 pixels (30 frames/sec.) with monaural sound *Optical zoom can be used.
Power supply	NP-45A Li-ion battery (included)
Dimensions	95.4 (W) × 56.9 (H) × 20.1 (D) mm / 3.8 (W) × 2.2 (H) × 0.8 (D) in. (Minimum depth: 17.45 mm / 0.7 in.)
Weight	Approx. 150 g / 5.3 oz. (including accessories, battery and memory card)

\*1: Number of effective pixels: The number of pixels on the image sensor which receive input light through the optical lens, and which are effectively reflected in the final output data of the still image.

\*2: Please see the Fujifilm website to check memory card compatibility.

\*3: Exif 2.3 is a digital camera file format that contains a variety of shooting information for optimal printing.

Microsoft, Windows and Windows logo are trademarks, or registered trademarks of Microsoft Corporation in the United States and/or other countries. Macintosh and Mac OS are trademarks of Apple Computer, Inc., registered in the U.S. and other countries. SDXC logo is a trademark of SD-3C, LLC. All other trademarks are the property of their respective holders.



For more information, please visit our Website:

[http://www.fujifilm.com/products/digital\\_cameras/index.html](http://www.fujifilm.com/products/digital_cameras/index.html)

Specifications are subject to change without notice.  
All sample photos are simulated images.

# FUJIFILM

# FINEPIX Z90

Super-cool touch-screen compact



**FUJIFILM**  
FUJIFILM Corporation

Ref. No. EB-1030E (SK-10-12-F1120-F9711) Printed in Japan ©2010 FUJIFILM Corporation

14 Megapixels

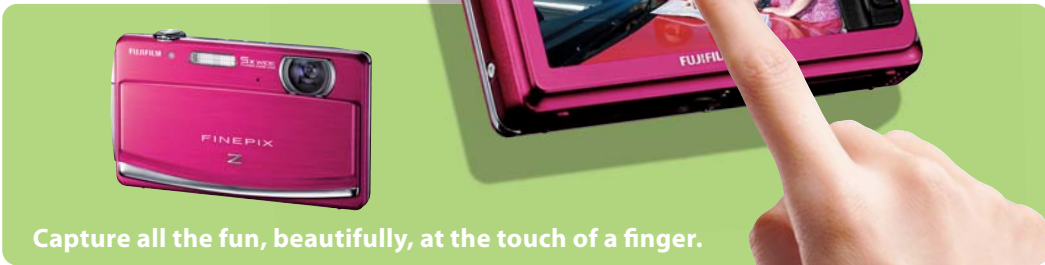
Fujinon 5x Optical Zoom

3.0-inch Touch Screen

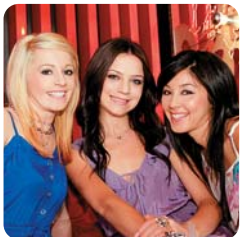


FinePix. More than you imagined.





Capture all the fun, beautifully, at the touch of a finger.



## Capture moments to create memories

### 14 Megapixels

The FinePix Z90 captures sharp, high-resolution photos and videos, suitable for enlarging or displaying on a big screen.

### Fujinon 5x Optical Zoom Lens + Wide-angle 28mm\*

A high-quality Fujinon 5x zoom lens delivers picture-perfect results across the entire zoom range. And 28mm wide-angle perspective lets you fit all the fun into every shot. \*35mm equivalent

### Touch & Shoot

Forget about fumbling for the shutter button! Simply touch the LCD screen to focus and capture images in an instant.

### Motion Panorama Mode

The FinePix Z90 automatically stitches together three consecutive shots, with simple in-frame guidance to ensure the images are aligned. The resulting image is saved to the memory card as an impressive panorama photo.



Conventional Digital Camera (35mm)

Fit Everyone into the Picture!



FinePix Z90 (28mm)



## Search and share your photos

### 3.0-inch Touch Screen

The bright 3.0-inch touch screen lets you frame and view photos with ease and gives you lots of room to enjoy playback of images and image search functions.

### Dual Direction GUI

The FinePix Z90 automatically shifts between landscape and portrait views when you turn the camera.

### Easy Operation with a Single Button

The LCD is flanked by a single button to switch between shooting and display modes. All other functions are controlled via icons displayed on the bright, clear touch screen interface.



Dual Direction GUI

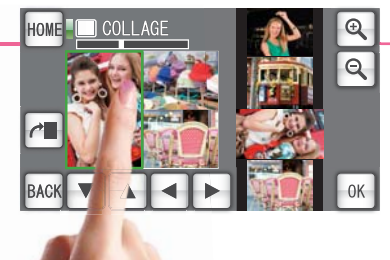
## Edit your images and movies in-camera

### Image Edit

Built-in software lets you edit and process your photos on-screen. In addition to trimming and adjustment of brightness, you can also create entertaining face mosaics and collage displays.

### Movie Edit

Edit your movie segments right on the big, bright LCD screen. In-camera Movie Edit software lets you cut and splice with the touch of a finger.



## Keep Your Social Networks Up to Date

### YouTube™ / FACEBOOK Uploader

Simply mark your photos or videos for YouTube™ or FACEBOOK in-camera, for effortless uploading of image data when the camera is connected to a PC running MyFinePix Studio.\*

\*Included with camera

